

## The rich and abundant wildlife of East Quarry, Appley Bridge



Roe Deer spotted in garden at Dawber Delph overlooking East Quarry, Appley Bridge



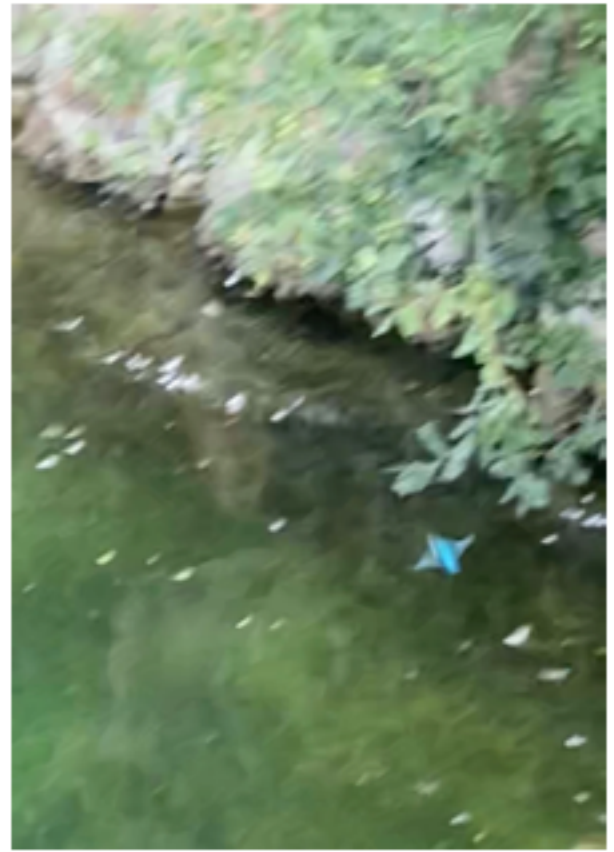
Roe Deer, Appley Bridge



Hedgehog, on the banks of East Quarry, Appley Bridge. Now classed as vulnerable due to the sharp decline in numbers.\*(1)



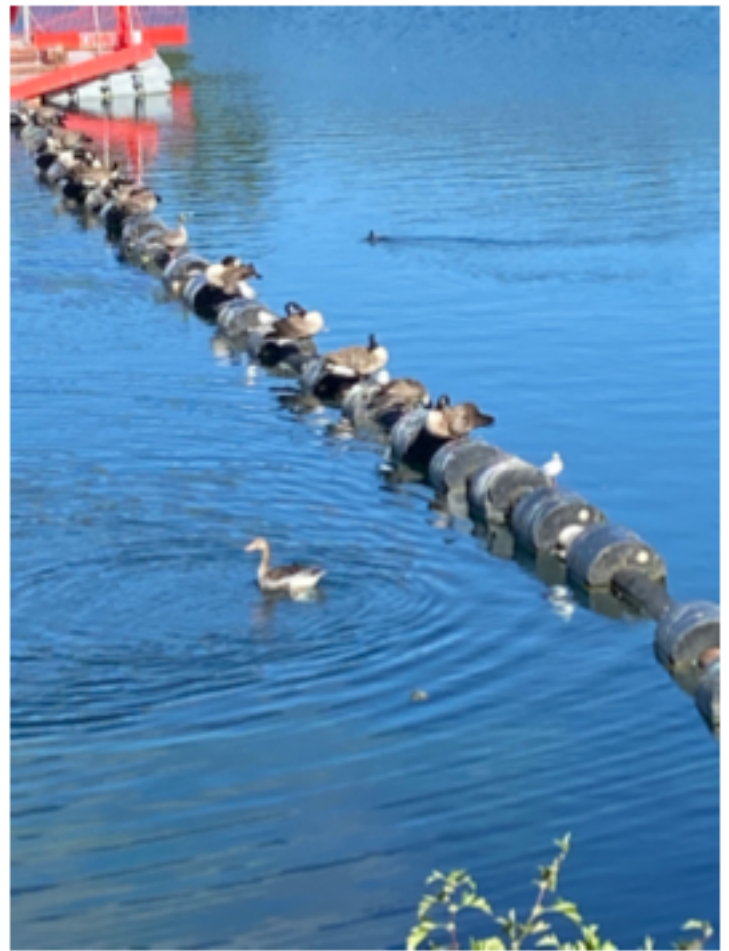
The ever elusive Kingfisher, East Quarry, Appley Bridge. UK Conservation status - Amber.\*(2)



Large flock of Herring Gull, residents of East Quarry, Appley Bridge and one of the 67 breeds of UK birds on the official endangered species Red list. \*(2)



Herring Gull and Cormorant, East Quarry, Appley Bridge



Greylag Geese on East Quarry, Appley Bridge. The Greylag Goose has the UK conservation status Amber. \*(2)



Canada Geese and Greylag Geese on East Quarry, Appley Bridge.





Mute Swans, East Quarry, Appley Bridge. UK Conservation status is Amber.\*(2)



Mute Swans with Cygnet, East Quarry, Appley Bridge.



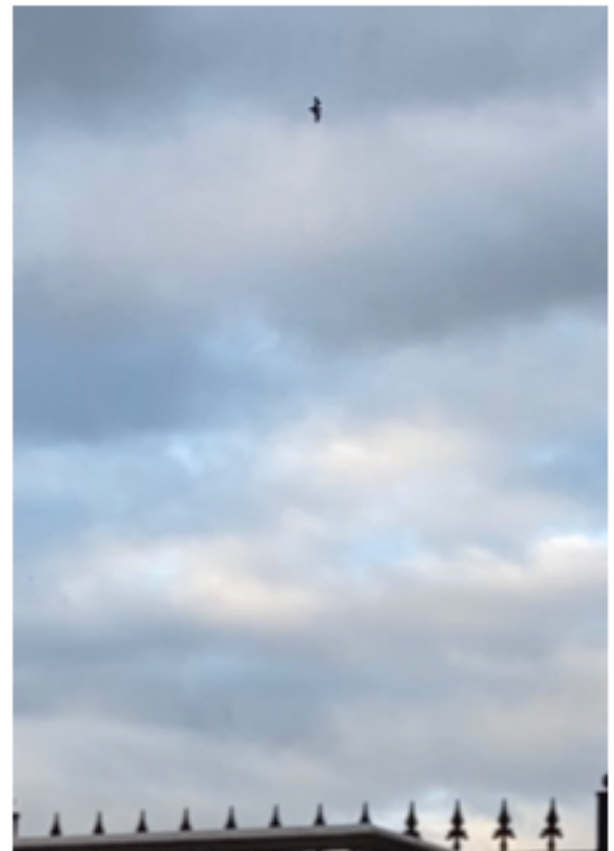
Mallard Duck with chicks, East Quarry, Appley Bridge. UK Conservation status - Amber.\*(2)



Here's what all those birds eat! Fish in East Quarry, Appley Bridge



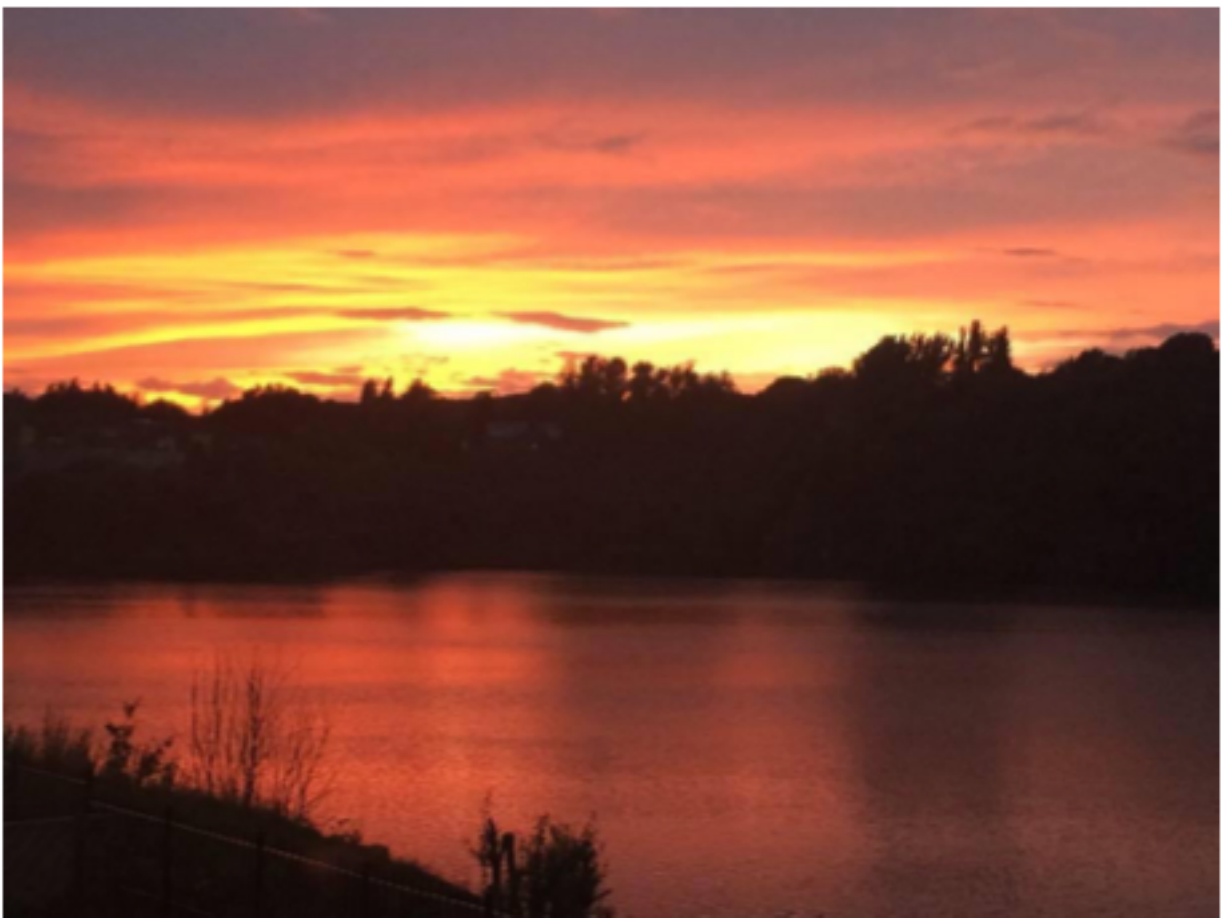
Great Crested Grebe at sunset on East Quarry, Appley Bridge



Daubenton's Bat, East Quarry, Appley Bridge. A number of other species of bat are regularly spotted around the quarry outside of the winter months when bats hibernate.\*(3)



East Quarry, in the beautiful village of Appley Bridge



- References: 1 - [www.britishhedgehogs.org.uk](http://www.britishhedgehogs.org.uk)  
2 - [www.rspb.org.uk](http://www.rspb.org.uk)  
3 - [www.bats.org.uk](http://www.bats.org.uk)

